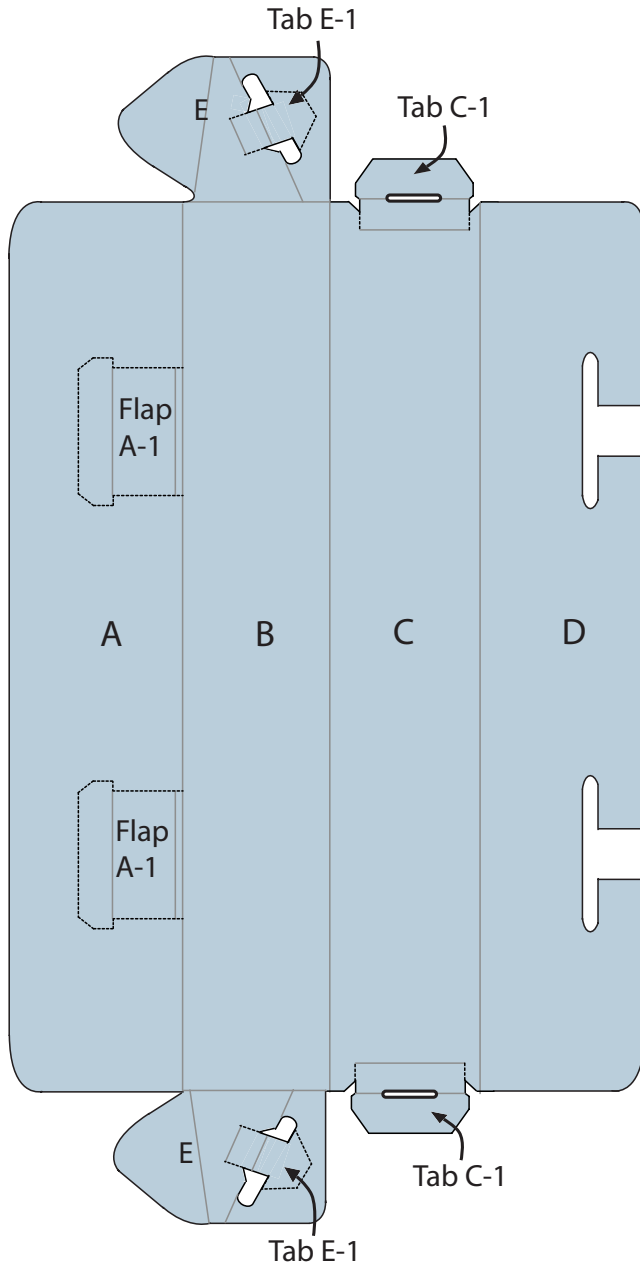


## PRODUCT INFORMATION SHEET

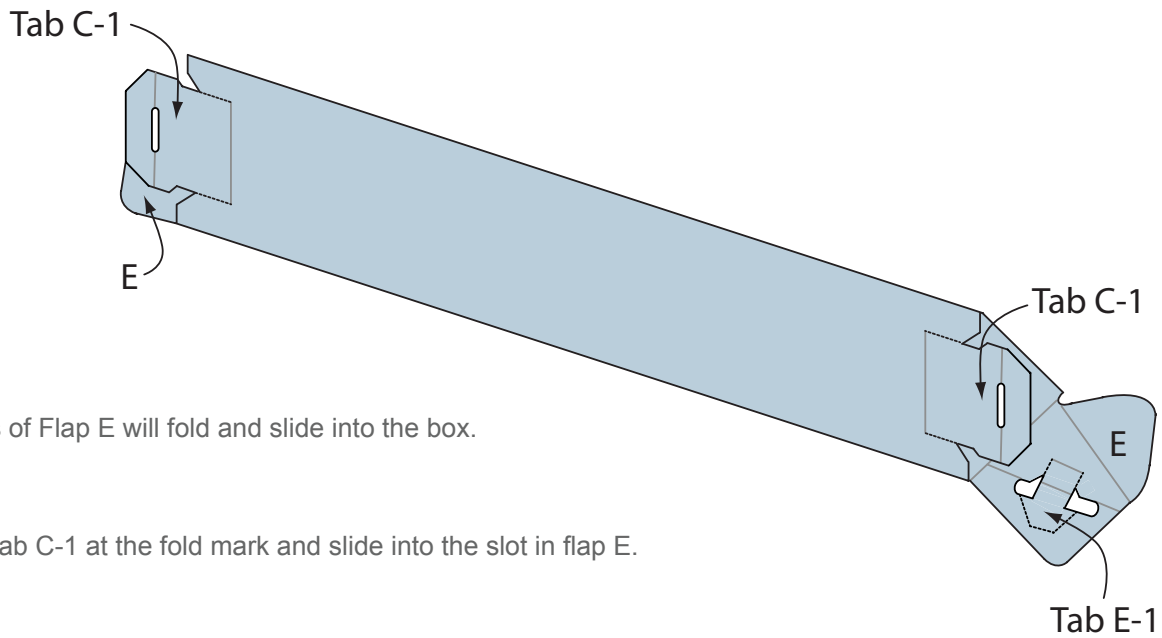
### Assembly instructions for: MOISTURE RESISTANT TRIANGULAR ROLL BOXES - BOX BASE



- 1 Unfold the box and lay flat on floor or on a table score side up. Scores are the straight-line indentations between the corners indicated as gray lines on the drawings.
- 2 In preparation for assembly, pre-fold all the gray lines to align in proper direction and create flexibility for the final folding. Then remove the perforations where the dashed lines are shown This pre-folding step makes the final assembly easier.
- 3 Facing the box as shown in the illustration fold flaps B and C so that they are at a 90 degree angle.
- 4 Fold flaps A and D up, flap A will fold to slide under flap D. This will form the triangular shape.
- 5 Flap A-1 will then slide into the slots in flap D. The box base is complete.

## PRODUCT INFORMATION SHEET

### Assembly instructions for: MOISTURE RESISTANT TRIANGULAR ROLL BOXES - BOX ENDS



- 1 Sides of Flap E will fold and slide into the box.
- 2 Fold tab C-1 at the fold mark and slide into the slot in flap E.
- 3 Tab E-1 will then slide into the slot on tab C-1. Box is complete.

Finished product:



156-5245+RTA-MR-Triangular-Roll-Boxes-INSTR.pdf