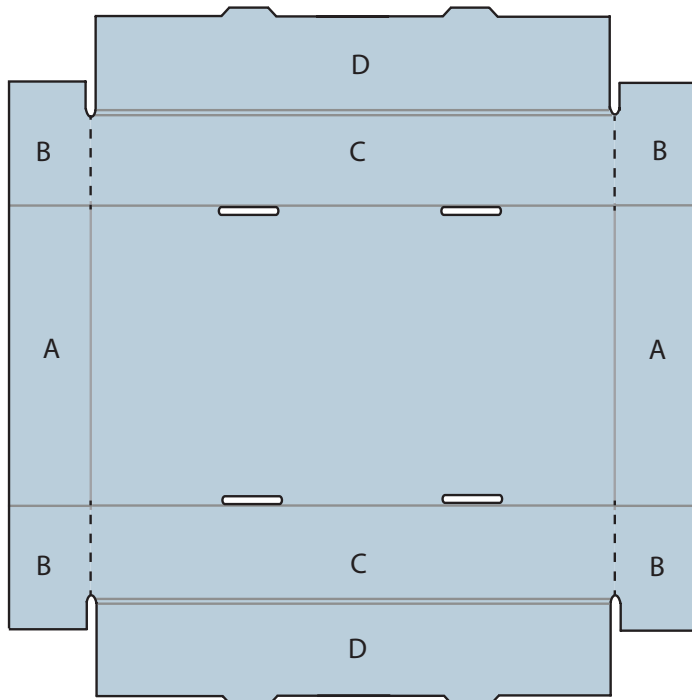


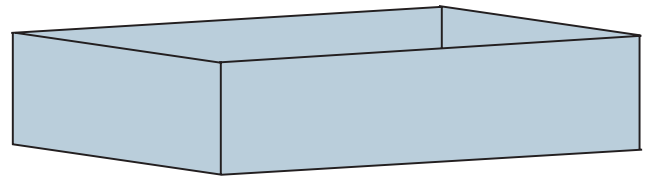
CORRUGATED TEXTILE STORAGE BOXES

Assembly instructions

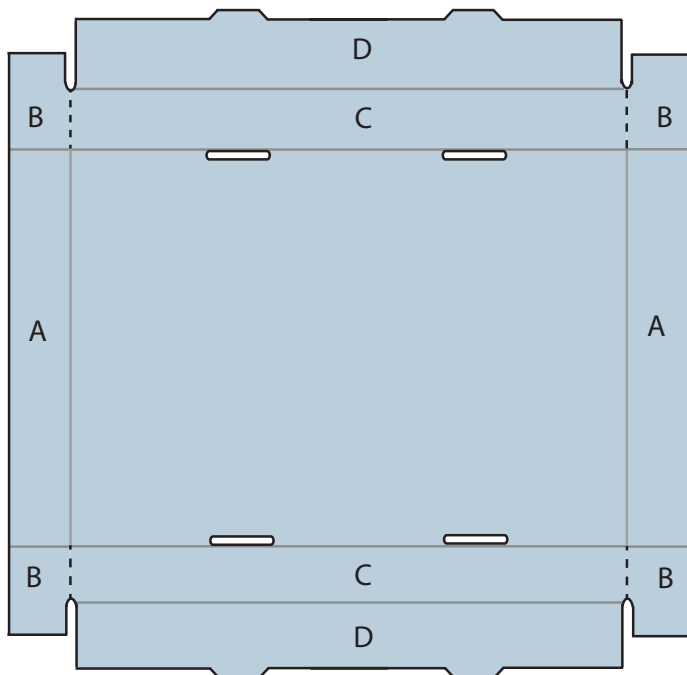
BOX BASE



- 1 Unfold the box and lay flat on floor or on a table score side up. Scores are the straight-line indentations between the corners indicated as gray lines on the drawings.
- 2 In preparation for assembly, pre-fold all the gray lines to align in proper direction and create flexibility for the final folding. This is particularly important at the narrow double score between flaps C and D. When assembly is complete, this narrow fold should form a flat edge, not a pointed edge. This pre-folding step makes the final assembly easier.
- 3 Facing the long side of the box (flaps C and D) fold up both A flaps. Bend tabs B 90 degrees inward. Fold flaps C and D and bend over the B tabs to trap between the C and D flaps. Snap the tabs from flap D into the slots in flap C to lock into place. The box base is complete.



BOX COVER



- 1 Unfold the box and lay flat on floor or on a table score side up. Scores are the straight-line indentations between the corners indicated as gray lines on the drawings.
- 2 In preparation for assembly, pre-fold all the gray lines to align in proper direction and create flexibility for the final folding. This is particularly important at the narrow double score between flaps C and D. When assembly is complete, this narrow fold should form a flat edge, not a pointed edge. This pre-folding step makes the final assembly easier.
- 3 Facing the long side of the box (flaps C and D) fold up both A flaps. Bend tabs B 90 degrees inward. Fold flaps C and D and bend over the B tabs to trap between the C and D flaps. Snap the tabs from flap D into the slots in flap C to lock into place. The box cover is complete.

613-3018+Corrugated-Textile-Storage-Box-INSTR.pdf



WWW.UNIVERSITYPRODUCTS.COM

PH 800-322-7775 • FAX 800-532-9281 • 517 MAIN STREET, PO BOX 101 • HOLYOKE, MA 01041-0101