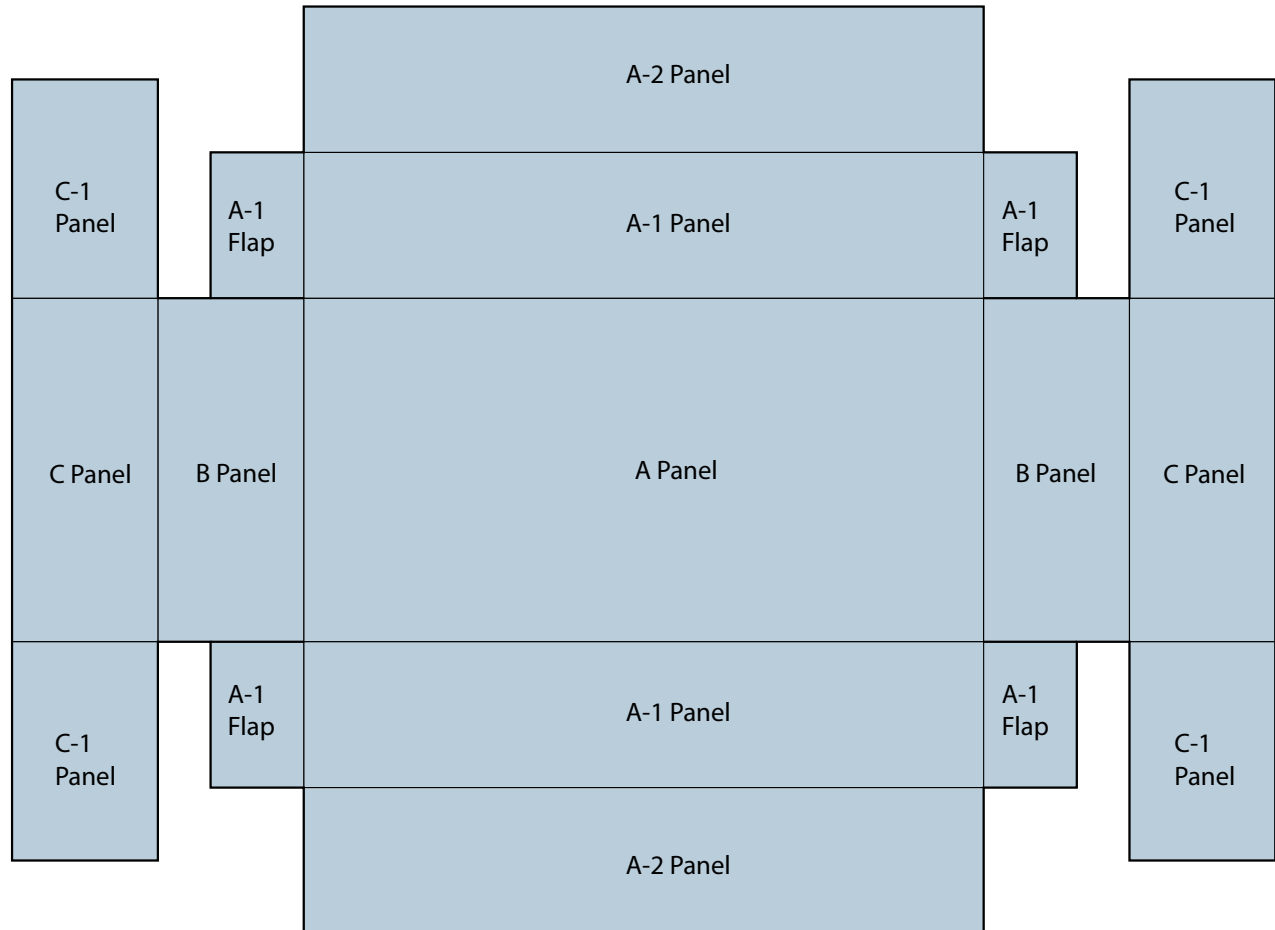


## PRODUCT INFORMATION SHEET

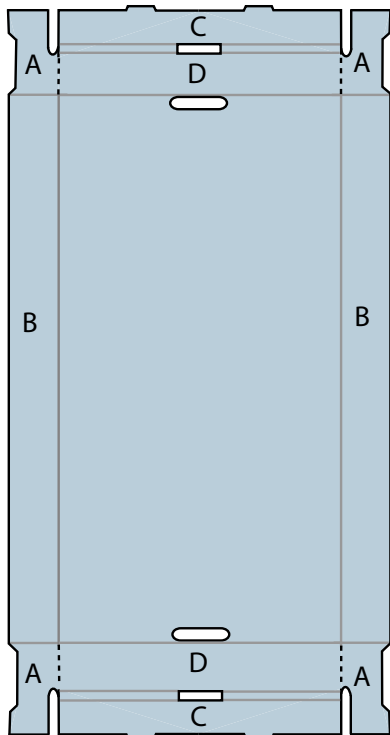
### HEAVY DUTY ARTIFACT BULK STORAGE TOTE BOX (Item: 613-7411): CARTON BASE - Assembly Instructions



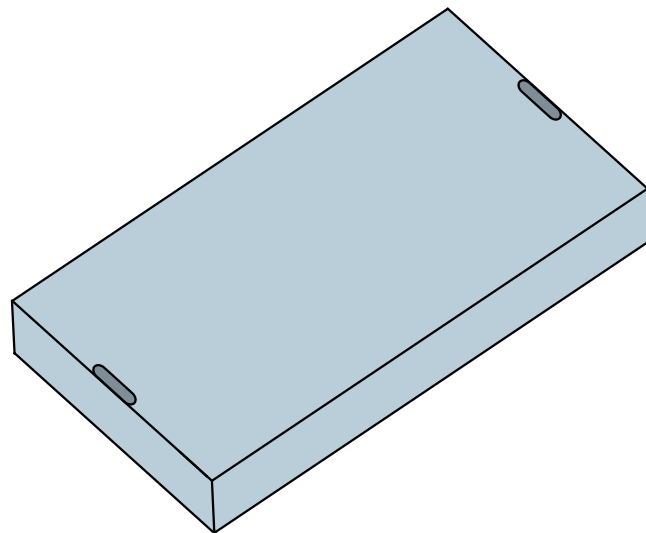
- 1 Carton shown flat.
- 2 Fold both A-1 Panels up, and fold all four A-1 flaps in, so they line up between A and B panels.
- 3 Fold B panel up so it's up against the A-1 flaps.
- 4 C-1 panels need to be folded out, away from the box. Fold down C panel and the C-1 panels will fold in so they sit up against A-1 panel.
- 5 Fold down the A-2 panels to lock the box into place.

## PRODUCT INFORMATION SHEET

### HEAVY DUTY ARTIFACT BULK STORAGE TOTE BOX (Item: 613-7411): CARTON COVER - Assembly Instructions



- 1 Fold both B panels up.
- 2 Remove perforations from panel A and fold in to line up with bottom of panel D.
- 3 Fold panels C and D over both panels A and lock into slots. The carton cover is complete.



Finished product:

