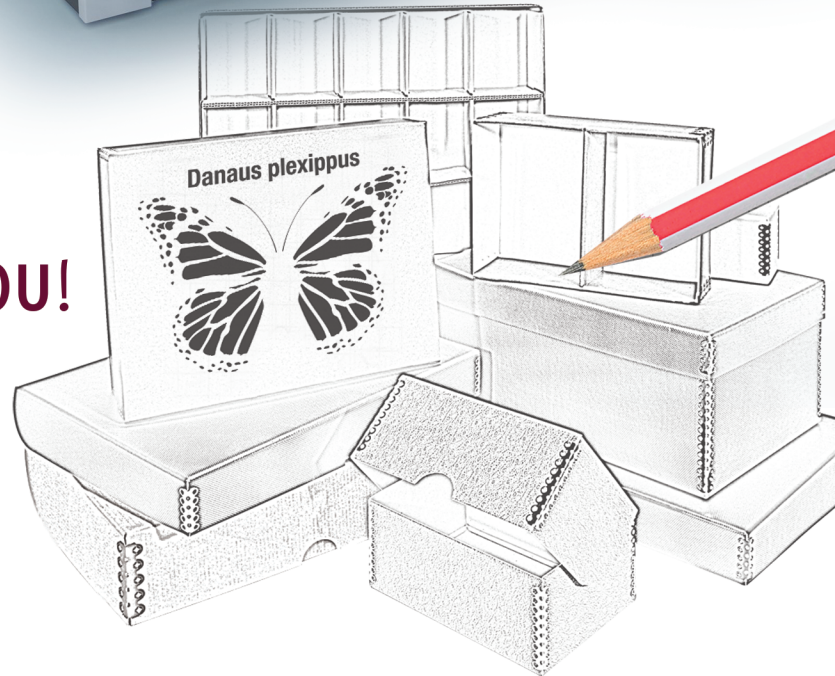


CUSTOM BOXES

We're putting the **CUSTOM** back into customer service. That's why University Products is utilizing a state-of-the-art **Zund G3** digital cutting system to create custom size boxes. No longer will high die charge costs prohibit the creation of as few as one custom size box.



University Products is pleased to introduce our new Product Designer – **YOU!**



You can choose the traditional archival **metal-edge design**, or the **ready-to-assemble** fold and lock design that ships and stores flat to save space and shipping costs. Create the box that best suits your needs – Call today for information.



UNIVERSITY
PRODUCTS

THINKING IN & OUT OF THE BOX SINCE 1968

517 Main Street, Holyoke, MA 01041

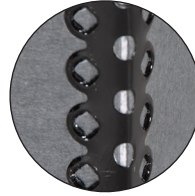
Call Customer Service **800.628.1912** | Shop Online at: www.universityproducts.com



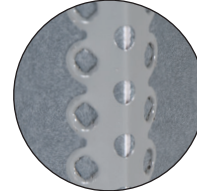
Take a look at your unique artifact
and consider all of your options:

Metal Corner Styles available in 3 colors

Black



Gray

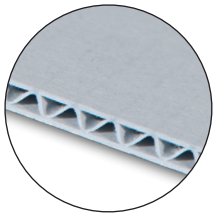


Buff

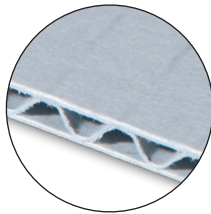


Pick Archival Board choose between Corrugated Board and Boxboard

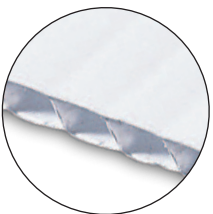
Blue/Gray
Corrugated E-Flute



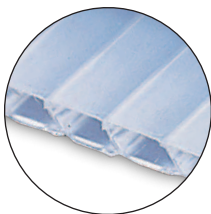
Blue/Gray
Corrugated B-Flute



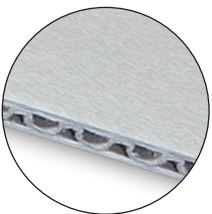
White B-flute
Corrugated
Coroplast®



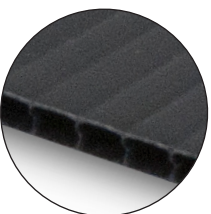
Translucent
Corrugated
Coroplast®



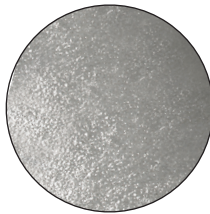
Moisture
Resistant Corrugated
Board



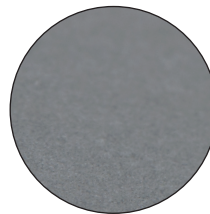
2 mil & 3 mil
Black Corrugated
Coroplast®



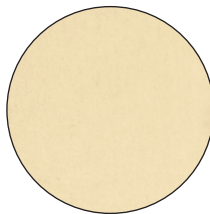
60 pt. Perma-Dry™
Boxboard



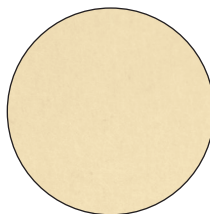
60 pt. Blue/Gray
Boxboard



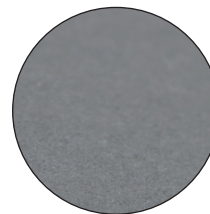
40 pt. & 60 pt.
Boxboard



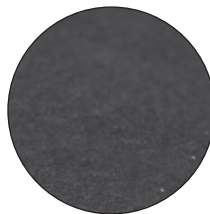
40 pt. Tan
Unbuffered
Boxboard



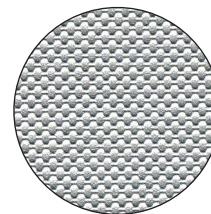
60 pt. Blue/Gray
Unbuffered
Boxboard



60 pt. Black
Boxboard



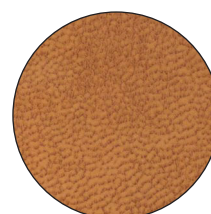
Metallic Silver
Boxboard



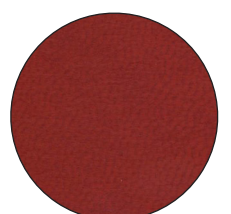
Metallic Black
Boxboard



Faux Leather
Saddle Boxboard



Faux Leather
Red Boxboard



Faux Leather
Black Boxboard



* Due to the nature of
print process, actual colors
may vary.

Take Measurements of the items you're planning to store in a box



If the item is oddly shaped,
don't forget to measure the
longest, the widest and the
tallest parts of it.



Want to create archival quality boxes in the exact size and style you require - without minimums, without die charges, and without hassles?
It's as easy as one, two, three.

Step 1. Choose the format and style that best fits your requirements.

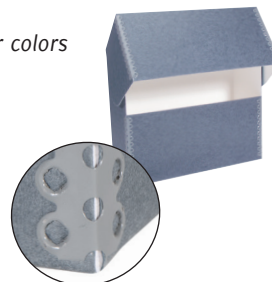
Choose a format:

- ☐ Ship flat/
ready-to-
assemble



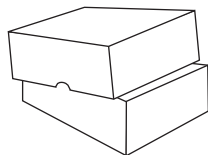
See opposite page for corner colors

- ☐ Metal Edge
Construction in
- ☐ Black
 - ☐ Buff
 - ☐ Gray

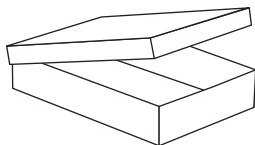


- ☐ Other
(see notes/
drawing)

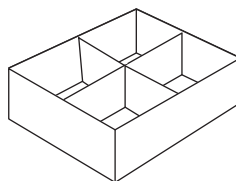
Choose a style:



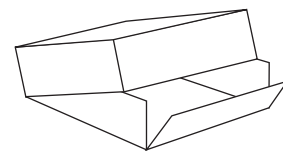
- ☐ 2 Pc. Deep Lid



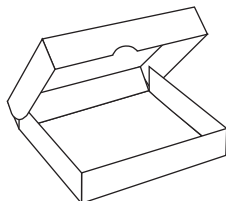
- ☐ 2 Pc. Short Lid



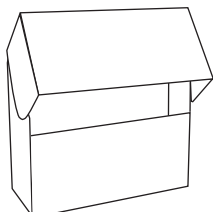
- ☐ Short Lid w/Dividers



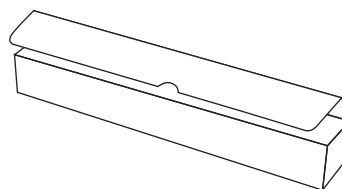
- ☐ 2 Pc. Drop Front



- ☐ Clamshell



- ☐ Document Case



- ☐ Roll Storage

Other
(see notes/
drawing)



Step 2. Choose the archival board which best suits your design.

See opposite page for board type/color samples

Archival Corrugated Board:

- ☐ Perma/Dur E-flute Corrugated
- ☐ Perma/Dur B-flute Corrugated
- ☐ White B-flute Coroplast®
- ☐ Translucent Coroplast®
- ☐ Black Coroplast®
- ☐ Moisture Resistant Corrugated

Archival Boxboard:

- ☐ 60 pt. Perma/Dry
Moisture Resistant*
- ☐ 60 pt. Unbuffered Blue/Gray*
- ☐ 60 pt. Blue/Gray*
- ☐ 60 pt. Tan
- ☐ 40 pt. Tan
- ☐ 40 pt. Unbuffered Tan
- ☐ 60 pt. Black*

Archival Board with Decorative Laminate:

- ☐ Metallic Silver*
- ☐ Metallic Black*
- ☐ Faux Leather Saddle*
- ☐ Faux Leather Red*
- ☐ Faux Leather Black*

- ☐ Other (see notes/drawing)

* Box would have white, acid-free interior

Step 3. Describe the dimensions of the box and the quantity required.

Please note: On ready-to-assemble boxes the height must be less than the width or length.

_____ L (longest dimension) x _____ W x _____ H,

- ☐ Outside dimensions or

Quantity of boxes required: _____

- ☐ Inside dimensions

Need a clear top? Clear top and bottom? A different color metal edge? Dividers? Tray inserts? Something other than a box? Just ask!

Contact Information:

Name: _____ Customer # _____
Institution: _____
Address: _____
City: _____ State/Province: _____ Zip/Postal Code _____
Country: _____ Telephone: _____ Fax: _____
Email: _____

Simply print this form, provide as much information as you can, and fax it back to us at **800-532-9281**. If you are requesting more than one box style, please fill out a separate form for each. We will contact you to provide a quote or to discuss your requirements in more detail.

Notes:

Feel free to provide a sketch of your design. The more information we receive the better we can respond.

