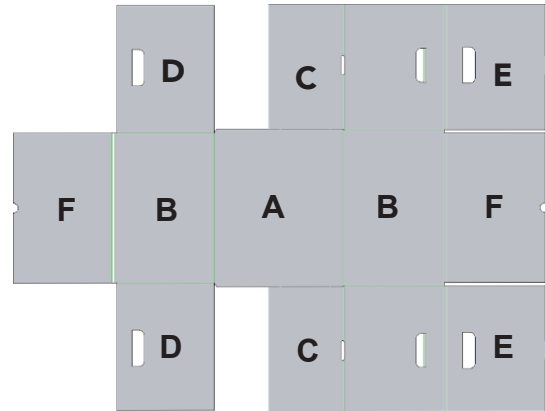
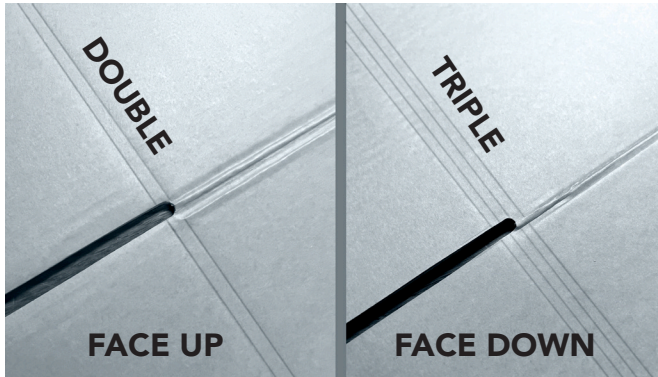


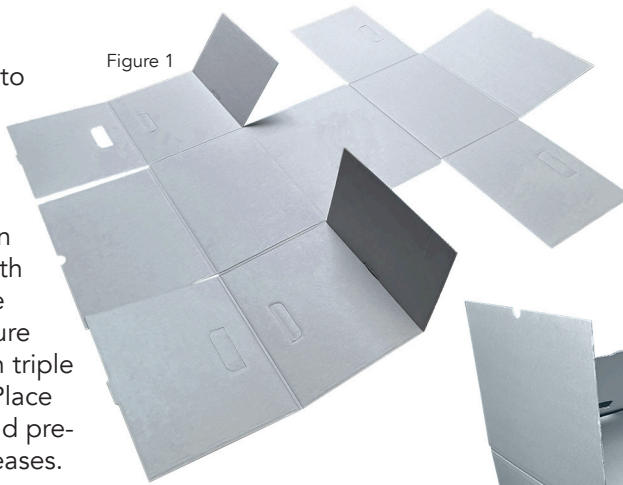
## ARCHIVAL TRIPLE STRENGTH RECORD STORAGE CARTON



### BASE ASSEMBLY:

1. It is very important to determine which side of the flat box you are looking at. Creases are designed to work much better in one direction. Side with double creases will be an INSIDE of your future box, and the side with triple creases is OUTSIDE. Place the box INSIDE UP and pre-fold all the double-creases.

Figure 1



3. Continue by folding in both D pieces.

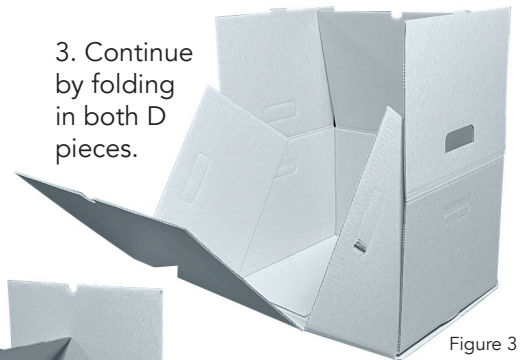


Figure 3

2. Start assembling by holding down A (bottom of the box) and folding in both Cs. If helps to use a free weight.

Figure 2



4. Fold in both E pieces, making sure the tabs snap into the corresponding slits on the bottom.

Figure 4



5. Last, fold in both F pieces, completing the box. Push in the handles creating strong holds for carrying or moving the box with heavy files or objects inside.



Figure 5

### COVER ASSEMBLY:

1. Lift side panels up and fold in small panels to center. (See Figure 6)
2. Fold end panel up and over flaps to lock tabs into slots. (See Figure 7)
3. Repeat step 2 on other end. (See Figure 7)

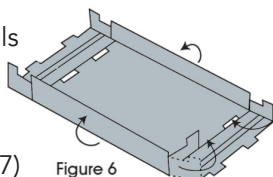


Figure 6

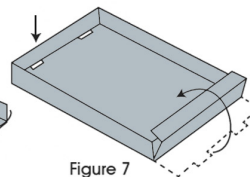


Figure 7

### FINISHED BOX:

