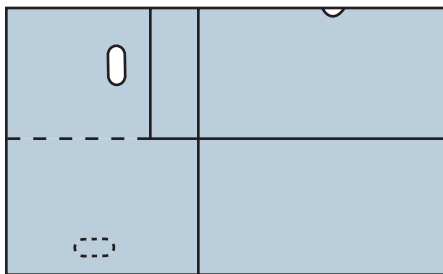


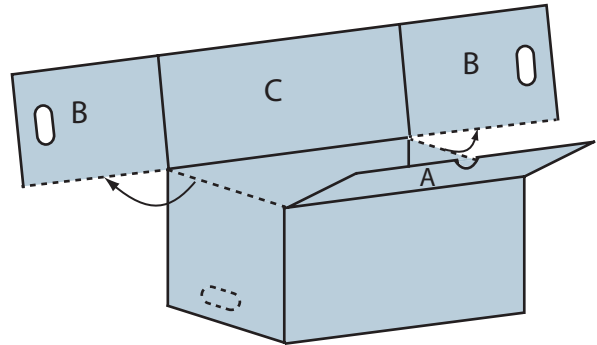
PRODUCT INFORMATION SHEET

Assembly instructions for: BULK STORAGE CARTONS - CARTON BASE

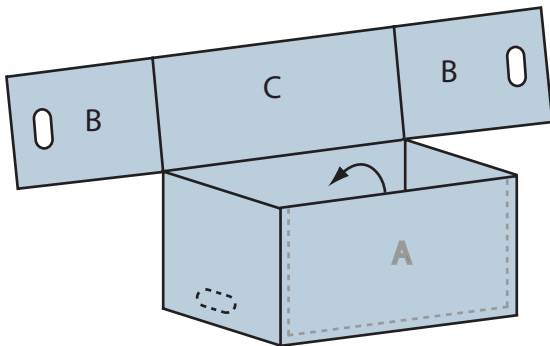
1 Carton shown flat.



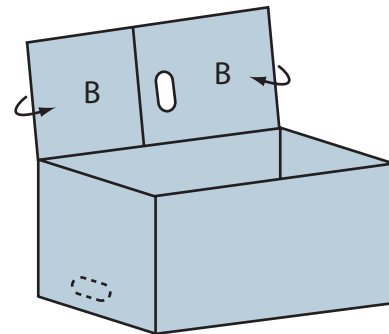
2 Separate bottom of panels B from the box. B and C will open out flat.



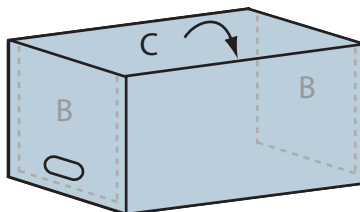
3 Fold flap A over and into the box.



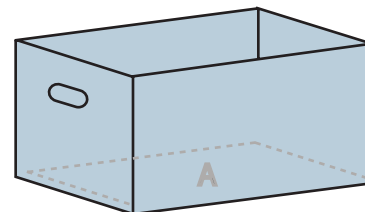
4 Fold both B panels over the center of panel C.



5 Fold panels B and C into carton. Open B panels up inside as shown. Panel C will make up the bottom of the carton.

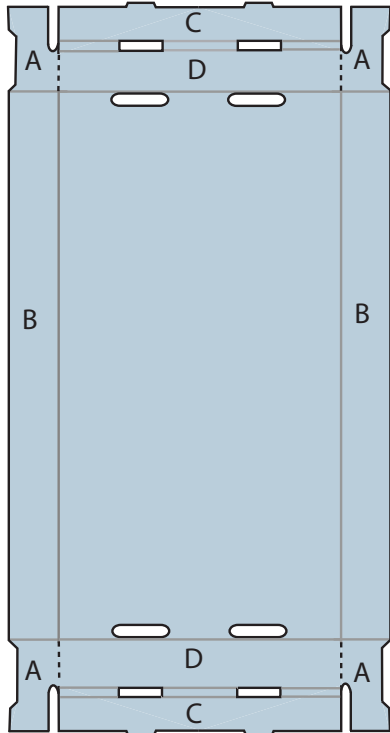


6 Flip the carton over. Fold panel A down to lay flush with panel C. Base carton is complete.

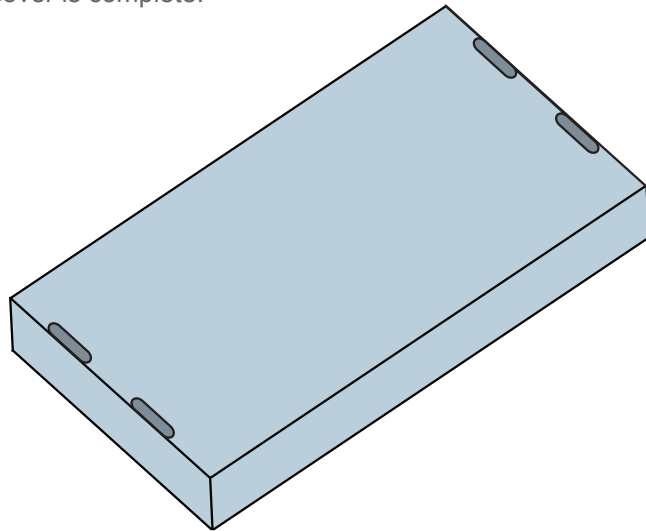


PRODUCT INFORMATION SHEET

Assembly instructions for: BULK STORAGE CARTONS - CARTON COVER



- 1 Fold both B panels up.
- 2 Remove perforations from panel A and fold in to line up with bottom of panel D.
- 3 Fold panels C and D over both panels A and lock into slots. The carton cover is complete.



Finished product:

