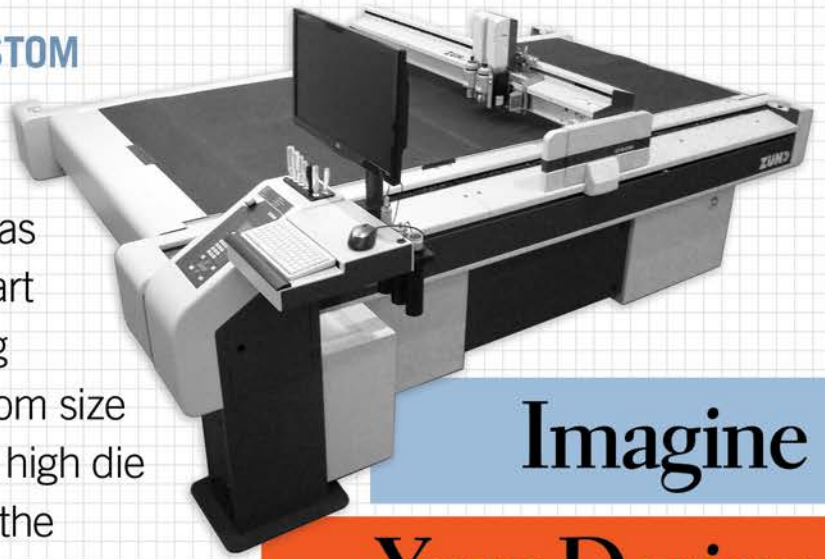


CUSTOM BOXES

We're putting the **CUSTOM** back into customer service. That's why University Products has added a state-of-the-art **Zund G3** digital cutting system to create custom size boxes. No longer will high die charge costs prohibit the creation of as few as one custom size box.



Imagine
Your Design

University Products is pleased to introduce our new **Product Designer – YOU.**

Your Archival Box

You can choose the traditional archival **metal-edge design**, or the **ready-to-assemble** fold and lock design that ships and stores flat to save space and shipping costs. Create the box that best suits your needs – Call today for information.



 universityproducts
THE ARCHIVAL COMPANY®

517 Main Street, Holyoke, MA 01041

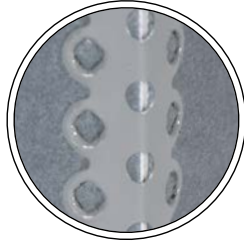
Call Customer Service 800.628.1912 | www.universityproducts.com

Metal Corner Styles available in 4 colors

Black



Gray



Buff

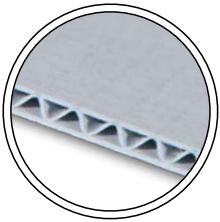


Chrome

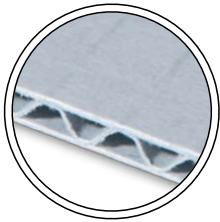


Pick Archival Board choose between Corrugated Board and Boxboard

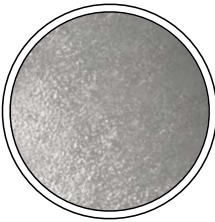
Blue/Gray
Corrugated E-Flute



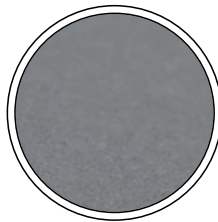
Blue/Gray
Corrugated B-Flute



60 pt. Perma-Dry™
Boxboard



60 pt. Blue/Gray
Boxboard



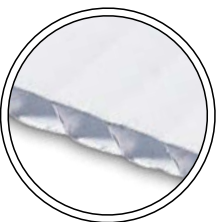
Pure White
Boxboard



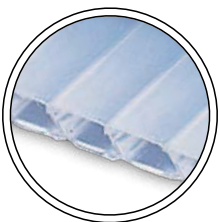
Ostrich
Boxboard



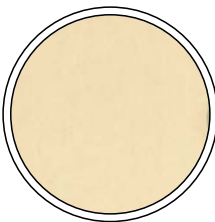
White B-flute
Corrugated
Coroplast®



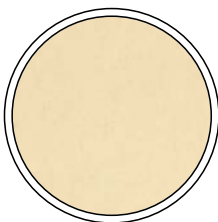
Translucent
Corrugated
Coroplast®



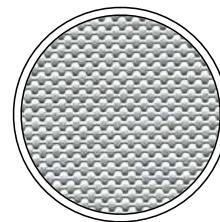
40 pt. & 60 pt.
Boxboard



40 pt. Tan
Unbuffered
Boxboard



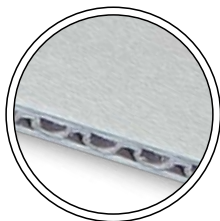
Metallic Silver
Boxboard



Metallic Black
Boxboard



Moisture
Resistant
Corrugated Board



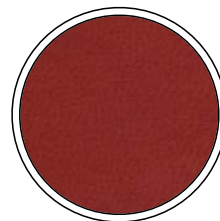
60 pt. Black
Boxboard



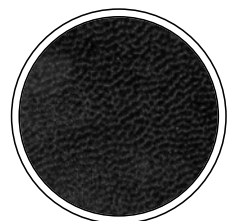
Faux Leather
Saddle Boxboard



Faux Leather
Red Boxboard



Faux Leather
Black Boxboard



* Due to the nature of print process, actual colors may vary.

Take Measurements of the items you're planning to store in a box



If the item is oddly shaped, don't forget to measure the longest, the widest and the tallest parts of it.



**Want to create archival quality boxes in the exact size and style you require - without minimums, without die charges, and without hassles?
It's as easy as one, two, three.**

Step 1. Choose the format and style that best fits your requirements.

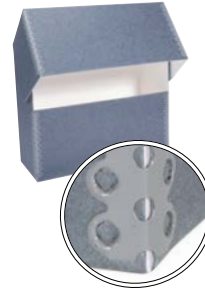
Choose a format:

- Ship flat/
ready-to-
assemble



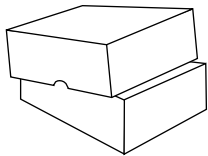
See opposite page for corner colors

- Metal Edge Construction
in Black Gray
 Buff Chrome

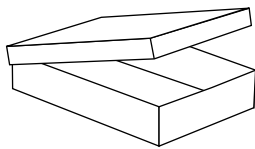


- Other
(see notes/
drawing)

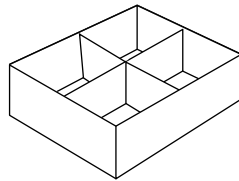
Choose a style:



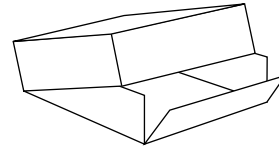
- 2 Pc. Deep Lid



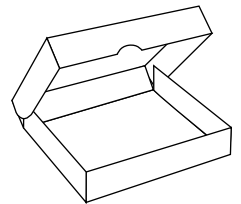
- 2 Pc. Short Lid



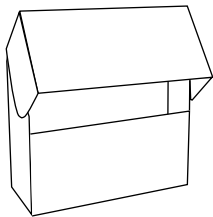
- Short Lid w/Dividers



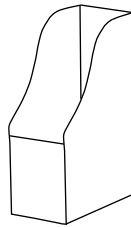
- 2 Pc. Drop Front



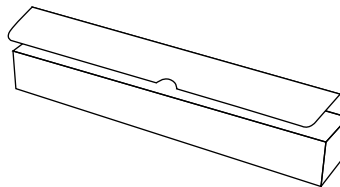
- Clamshell



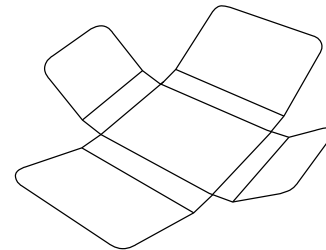
- Document Case



- Pamphlet File



- Roll Storage



- Phase Box

Other
(see notes/
drawing)

-

Step 2. Choose the archival board which best suits your design.

See opposite page for board type/color samples

**Archival
Corrugated Board:**

- Perma/Dur E-flute Corrugated
- Perma/Dur B-flute Corrugated
- White B-flute Coroplast®
- Translucent Coroplast®
- Moisture Resistant Corrugated

- Other (see notes/drawing)

Archival Boxboard:

- 60 pt. Perma/Dry
Moisture Resistant*
- 60 pt. Blue/gray*
- 60 pt. Tan
- 40 pt. Tan
- 40 pt. Unbuffered Tan
- 60 pt. Black*

**Archival Board
with Decorative Laminate:**

- Pure White*
- Ostrich*
- Metallic Silver *
- Metallic Black *
- Faux Leather Saddle*
- Faux Leather Red*
- Faux Leather Black*

* Box would have white, acid-free interior

Step 3. Describe the dimensions of the box and the quantity required.

Please note: On ready-to-assemble boxes the height must be less than the width or length.

___ **L** (longest dimension) x ___ **W** x ___ **H**,

- Outside dimensions or

Quantity of boxes required: _____

- Inside dimensions

Need a clear top? Clear top and bottom? Volara® foam padding? A different color metal edge? Dividers? Tray inserts? Something other than a box? Just ask!

Contact Information:

Name: _____ Customer # _____
Institution: _____
Address: _____
City: _____ State/Province: _____ Zip/Postal Code _____
Country: _____ Telephone: _____ Fax: _____
Email: _____

Simply print this form, provide as much information as you can, and fax it back to us at **800-532-9281**. If you are requesting more than one box style, please fill out a separate form for each. We will contact you to provide a quote or to discuss your requirements in more detail.

Notes:

Feel free to provide a sketch of your design. The more information we receive the better we can respond.

